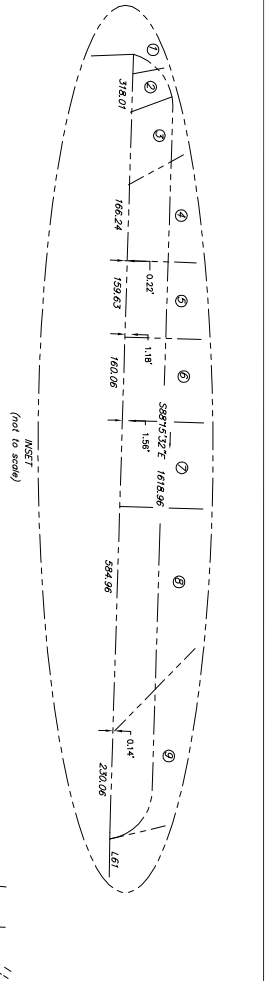
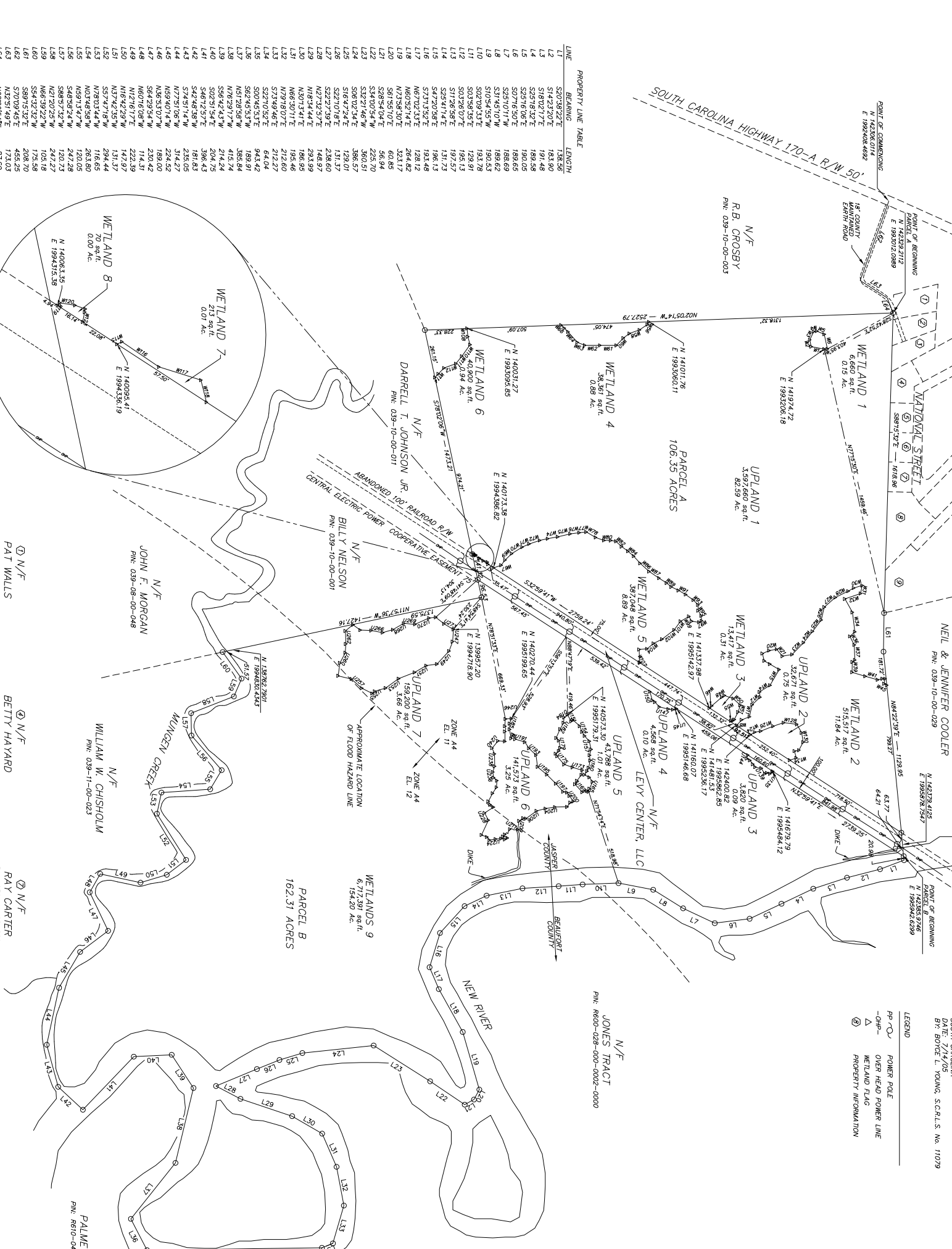


VICINITY MAP NOT TO SCALE



WETLAND 1
106.35 ACRES



PARCEL A 106.35 ACRES
PARCEL B 162.31 ACRES

- NOTES:
- THIS PARCEL APPEARS TO BE IN FLOOD ZONE A-4 (10K, EL. 11' & 12'), PER FIRM PANEL NO. 200-B, COMMUNITY NO. 450112, DATED 9/25/06, BASED ON REFERENCE PLAT.
 - FLOOD HAZARD LINES SHOWN WERE SCALED FROM FLOOD INSURANCE RATE MAP (FIRM) PANEL NO. 1.
 - SOUTH CAROLINA STATE PLANE COORDINATES ARE BASED ON NAD 83 (1983), FROM REFERENCE NO. 1.
- REFERENCE:
1. 7A BOUNDARY PLAT OF PARCELS A AND PARCEL B SITUATED ALONG NEW RIVER AND MUNGUN CREEK, JASPER COUNTY, SOUTH CAROLINA.
DATE: 11/05
BY: BOBIE L. YOUNG, S.C.L.S. NO. 11079
- LEGEND
- PP POWER POLE
 - PH- OVER HEAD POWER LINE
 - ▲ WETLAND FLAG
 - ⊙ PROPERTY INFORMATION

WETLAND LINE TABLE

LINE	BEARING	LENGTH	LINE	BEARING	LENGTH
W1	N 14101.76	106.35	W101	N 14101.76	106.35
W2	E 199306.11	106.35	W102	E 199306.11	106.35
W3	S 10743.07	106.35	W103	S 10743.07	106.35
W4	S 64.62	106.35	W104	S 64.62	106.35
W5	N 10706.27	106.35	W105	N 10706.27	106.35
W6	N 43.90	106.35	W106	N 43.90	106.35
W7	N 752.13	106.35	W107	N 752.13	106.35
W8	S 02.07	106.35	W108	S 02.07	106.35
W9	N 141481.53	106.35	W109	N 141481.53	106.35
W10	E 199328.17	106.35	W110	E 199328.17	106.35
W11	N 40.38	106.35	W111	N 40.38	106.35
W12	N 80.74	106.35	W112	N 80.74	106.35
W13	N 72.71	106.35	W113	N 72.71	106.35
W14	N 64.62	106.35	W114	N 64.62	106.35
W15	N 43.90	106.35	W115	N 43.90	106.35
W16	N 23.17	106.35	W116	N 23.17	106.35
W17	N 2.04	106.35	W117	N 2.04	106.35
W18	N 1.02	106.35	W118	N 1.02	106.35
W19	N 0.51	106.35	W119	N 0.51	106.35
W20	N 0.26	106.35	W120	N 0.26	106.35
W21	N 0.13	106.35	W121	N 0.13	106.35
W22	N 0.06	106.35	W122	N 0.06	106.35
W23	N 0.03	106.35	W123	N 0.03	106.35
W24	N 0.01	106.35	W124	N 0.01	106.35
W25	N 0.00	106.35	W125	N 0.00	106.35

PROPERTY LINE TABLE

LINE	BEARING	LENGTH	LINE	BEARING	LENGTH
L1	S 207.38	222.7	L101	S 207.38	222.7
L2	S 142.32	183.90	L102	S 142.32	183.90
L3	S 102.17	189.58	L103	S 102.17	189.58
L4	S 25.16	190.05	L104	S 25.16	190.05
L5	S 07.16	188.65	L105	S 07.16	188.65
L6	S 01.11	188.62	L106	S 01.11	188.62
L7	S 00.55	190.53	L107	S 00.55	190.53
L8	S 00.45	190.53	L108	S 00.45	190.53
L9	S 00.33	190.53	L109	S 00.33	190.53
L10	S 00.20	190.53	L110	S 00.20	190.53
L11	S 00.07	198.13	L111	S 00.07	198.13
L12	S 00.00	197.57	L112	S 00.00	197.57
L13	S 00.00	197.57	L113	S 00.00	197.57
L14	S 00.00	197.57	L114	S 00.00	197.57
L15	S 00.00	197.57	L115	S 00.00	197.57
L16	S 00.00	197.57	L116	S 00.00	197.57
L17	S 00.00	197.57	L117	S 00.00	197.57
L18	S 00.00	197.57	L118	S 00.00	197.57
L19	S 00.00	197.57	L119	S 00.00	197.57
L20	S 00.00	197.57	L120	S 00.00	197.57
L21	S 00.00	197.57	L121	S 00.00	197.57
L22	S 00.00	197.57	L122	S 00.00	197.57
L23	S 00.00	197.57	L123	S 00.00	197.57
L24	S 00.00	197.57	L124	S 00.00	197.57
L25	S 00.00	197.57	L125	S 00.00	197.57
L26	S 00.00	197.57	L126	S 00.00	197.57
L27	S 00.00	197.57	L127	S 00.00	197.57
L28	S 00.00	197.57	L128	S 00.00	197.57
L29	S 00.00	197.57	L129	S 00.00	197.57
L30	S 00.00	197.57	L130	S 00.00	197.57
L31	S 00.00	197.57	L131	S 00.00	197.57
L32	S 00.00	197.57	L132	S 00.00	197.57
L33	S 00.00	197.57	L133	S 00.00	197.57
L34	S 00.00	197.57	L134	S 00.00	197.57
L35	S 00.00	197.57	L135	S 00.00	197.57
L36	S 00.00	197.57	L136	S 00.00	197.57
L37	S 00.00	197.57	L137	S 00.00	197.57
L38	S 00.00	197.57	L138	S 00.00	197.57
L39	S 00.00	197.57	L139	S 00.00	197.57
L40	S 00.00	197.57	L140	S 00.00	197.57
L41	S 00.00	197.57	L141	S 00.00	197.57
L42	S 00.00	197.57	L142	S 00.00	197.57
L43	S 00.00	197.57	L143	S 00.00	197.57
L44	S 00.00	197.57	L144	S 00.00	197.57
L45	S 00.00	197.57	L145	S 00.00	197.57
L46	S 00.00	197.57	L146	S 00.00	197.57
L47	S 00.00	197.57	L147	S 00.00	197.57
L48	S 00.00	197.57	L148	S 00.00	197.57
L49	S 00.00	197.57	L149	S 00.00	197.57
L50	S 00.00	197.57	L150	S 00.00	197.57
L51	S 00.00	197.57	L151	S 00.00	197.57
L52	S 00.00	197.57	L152	S 00.00	197.57
L53	S 00.00	197.57	L153	S 00.00	197.57
L54	S 00.00	197.57	L154	S 00.00	197.57
L55	S 00.00	197.57	L155	S 00.00	197.57
L56	S 00.00	197.57	L156	S 00.00	197.57
L57	S 00.00	197.57	L157	S 00.00	197.57
L58	S 00.00	197.57	L158	S 00.00	197.57
L59	S 00.00	197.57	L159	S 00.00	197.57
L60	S 00.00	197.57	L160	S 00.00	197.57
L61	S 00.00	197.57	L161	S 00.00	197.57
L62	S 00.00	197.57	L162	S 00.00	197.57
L63	S 00.00	197.57	L163	S 00.00	197.57
L64	S 00.00	197.57	L164	S 00.00	197.57

ACREAGE SUMMARY

PARCEL	ACRES
PARCEL A	106.35 Acres
UPLAND	83.33 Acres
WETLAND	23.02 Acres
PARCEL B	162.31 Acres
UPLAND	81.1 Acres
WETLAND	81.20 Acres
TOTAL	268.66 Acres

WETLAND 1

LINE	BEARING	LENGTH	LINE	BEARING	LENGTH
W1	N 14101.76	106.35	W101	N 14101.76	106.35
W2	E 199306.11	106.35	W102	E 199306.11	106.35
W3	S 10743.07	106.35	W103	S 10743.07	106.35
W4	S 64.62	106.35	W104	S 64.62	106.35
W5	N 10706.27	106.35	W105	N 10706.27	106.35
W6	N 43.90	106.35	W106	N 43.90	106.35
W7	N 752.13	106.35	W107	N 752.13	106.35
W8	S 02.07	106.35	W108	S 02.07	106.35
W9	N 141481.53	106.35	W109	N 141481.53	106.35
W10	E 199328.17	106.35	W110	E 199328.17	106.35
W11	N 40.38	106.35	W111	N 40.38	106.35
W12	N 80.74	106.35	W112	N 80.74	106.35
W13	N 72.71	106.35	W113	N 72.71	106.35
W14	N 64.62	106.35	W114	N 64.62	106.35
W15	N 43.90	106.35	W115	N 43.90	106.35
W16	N 23.17	106.35	W116	N 23.17	106.35
W17	N 2.04	106.35	W117	N 2.04	106.35
W18	N 1.02	106.35	W118	N 1.02	106.35
W19	N 0.51	106.35	W119	N 0.51	106.35
W20	N 0.26	106.35	W120	N 0.26	106.35
W21	N 0.13	106.35	W121	N 0.13	106.35
W22	N 0.06	106.35	W122	N 0.06	106.35
W23	N 0.03	106.35	W123	N 0.03	106.35
W24	N 0.01	106.35	W124	N 0.01	106.35
W25	N 0.00	106.35	W125	N 0.00	106.35

WETLAND 2

LINE	BEARING	LENGTH	LINE	BEARING	LENGTH
W26	N 14101.76	106.35	W126	N 14101.76	106.35
W27	E 199306.11	106.35	W127	E 199306.11	106.35
W28	S 10743.07	106.35	W128	S 10743.07	106.35
W29	S 64.62	106.35	W129	S 64.62	106.35
W30	N 10706.27	106.35	W130	N 10706.27	106.35
W31	N 43.90	106.35	W131	N 43.90	106.35
W32	N 752.13	106.35	W132	N 752.13	106.35
W33	S 02.07	106.35	W133	S 02.07	106.35
W34	N 141481.53	106.35	W134	N 141481.53	106.35
W35	E 199328.17	106.35	W135	E 199328.17	106.35
W36	N 40.38	106.35	W136	N 40.38	106.35
W37	N 80.74	106.35	W137	N 80.74	106.35
W38	N 72.71	106.35	W138	N 72.71	106.35
W39	N 64.62	106.35	W139	N 64.62	106.35
W40	N 43.90	106.35	W140	N 43.90	106.35
W41	N 23.17	106.35	W141	N 23.17	106.35
W42	N 2.04	106.35	W142	N 2.04	106.35
W43	N 1.02	106.35	W143	N 1.02	106.35
W44	N 0.51	106.35	W144	N 0.51	106.35
W45	N 0.26	106.35	W145	N 0.26	106.35
W46	N 0.13	106.35	W146	N 0.13	106.35
W47	N 0.06	106.35	W147	N 0.06	106.35
W48	N 0.03	106.35	W148	N 0.03	106.35
W49	N 0.01	106.35	W149	N 0.01	106.35
W50	N 0.00	106.35	W150	N 0.00	106.35

WETLAND 3

LINE	BEARING	LENGTH	LINE	BEARING	LENGTH
W51	N 14101.76	106.35	W151	N 14101.76	106.35
W52	E 199306.11	106.35	W152	E 199306.11	106.35
W53	S 10743.07	106.35	W153	S 10743.07	106.35
W54	S 64.62	106.35	W154	S 64.62	106.35
W55	N 10706.27	106.35	W155	N 10706.27	106.35